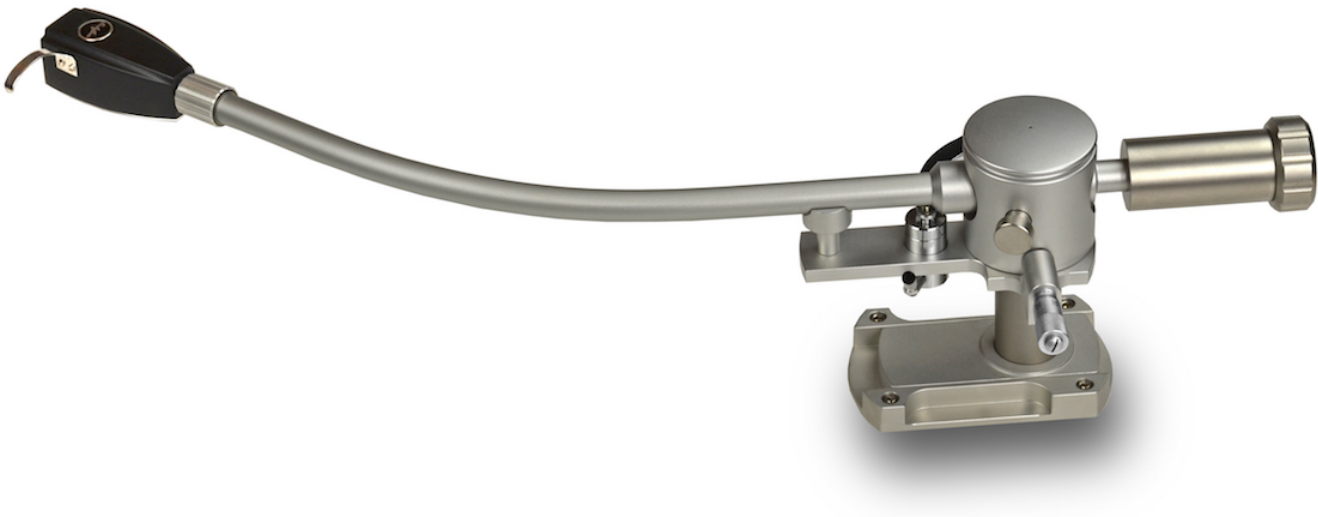


# Audio Creative GrooveMaster II

User manual



Dear Audio Creative customer,

Thank you for purchasing the GrooveMaster II tonearm. The innovative GrooveMaster II tonearm features high quality ceramic bearing technology, a micrometer-style adjustable anti skating and an azimuth adjustable tonearm connector and headshell, which is especially designed to allow easy and accurate alignment of the phono cartridge.

Audio Creative recommends the GrooveMaster II tonearm in combination with the Audio Creative Ebony headshell for best performance or any of the Ortofon SPU cartridges. Made in The Netherlands by true expert craftsmen, the latest GrooveMaster II technology combining a timeless, classic design ensure the best possible sound enjoyment. Please read this instruction manual carefully, to avoid any damage or loss of warranty. This manual will help you achieve an easy setup and guarantees the highest pleasure for a long time. We wish you a lot of listening pleasure with your new GrooveMaster II tonearm.

The Audio Creative team

**Content:**

1. General tonearm data .....	4
2. Mounting your GrooveMaster II .....	5
3. Mounting the GrooveMaster on new record players.....	6
4. Mounting the GrooveMaster on existing record players.....	7
5. Connection of the arm cable.....	8
6. Setting the Tracking force.....	9
7. Adjustment the tonearm height (Vertical-Tracking-Angle / VTA).....	10
8. Alignment of cartridge and tonearm.....	11
9. Setting Azimuth on the Ebony headshell.....	12
10. Setting Azimuth on the tonearm.....	13
11. Arm lift (cueing device) .....	14
12. Anti Skating .....	15
13. Maintenance, transportation, service.....	16

## 1. General tonearm data

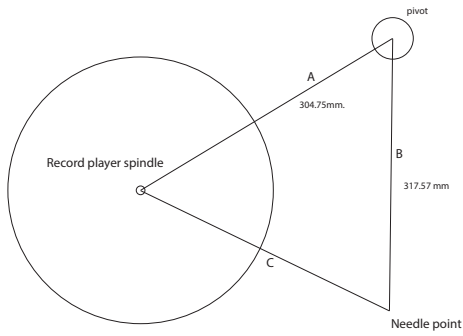
Construction details:	High quality ceramic bearing technology tonearm, micrometer style adjustable magnetic antiskating, adjustable counterweight. Available with Titanium or aluminium arm tube
Cartridge balance range	2,5 - 40 gram
Tonearm length	12 " (304,75 mm.)
Tonearm wiring	99.999% silver wire, 38AWG terminated with Teflon 5 pin DIN connector
Length Pivot to Spindle	304.75 mm.
Offset angle	17,11 °
Overhang (mm.)	12.82
Effective length	317.57 mm.
Bearwald Null points	66, 120.9 mm.
Effective Mass Aluminium armtube	approx. 22.0 gram
Effective Mass Titanium armtube	approx. 29.0 gram
Cartridge compliance range Aluminium tonearm	5 - 20 $\mu\text{m}/\text{mN}$
Cartridge compliance range Titanium tonearm	5 - 15 $\mu\text{m}/\text{mN}$
Tonearm connector	DIN 5P connector
Headshell connector	EIA standards 4 Pin connector

## 2. Mounting your GrooveMaster II

In the box you will find an accurate mounting sjablone.

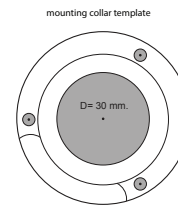
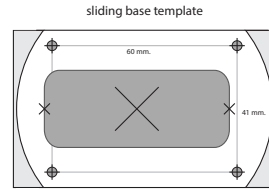
Please prepare your turntable with the correct positions of the mounting holes for the arm base and/or sliding base. You find the dimensions in the picture below and on the sjablone.

audio  creative  
GrooveMaster-II



A= pivot to spindle = 304.75 mm.  
B= effective length = 317.57 mm.  
C= distance spindle to needle = 240 mm. (+/- 10 mm.)  
Overhang= 12,82 mm.  
Offset angle= 17.11 degrees

Anti Skating Setting GrooveMaster-II	
VTF	micrometer setting
1	6
1.5	5.5
2	5
2.5	4
3	3.5
3.5	3
4	2.5
4.5	1.2



Mounting template pivot to spindle



### 3. Mounting the GrooveMaster on new record players

Use the supplied mounting template for the GrooveMaster II. Drill a 30mm diameter hole on the arm board of the turntable 304,75 mm away from the turntable spindle center. Check if the distance needle-turntable spindle is 240 mm (+/- 10 mm.). See mounting sjablone for details. Once found mark this position with a sharp point through the three arm-base mounting holes. Drill these holes as appropriate for the supplied screws or bolts and fix the base to the turntable.



#### 4. Mounting the GrooveMaster on existing record players

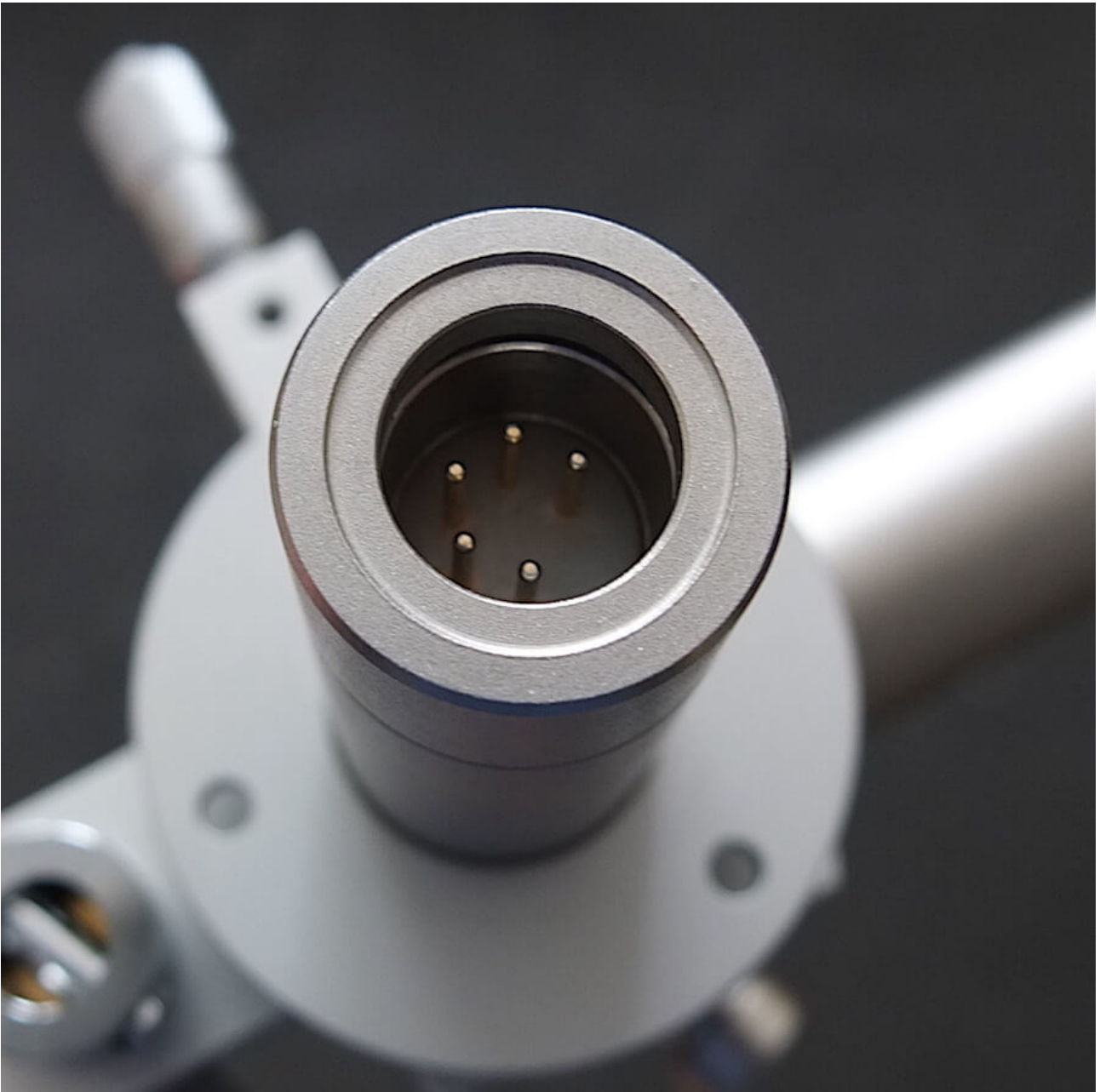
The sliding base will fit exactly on the SME sliding base position. Just replace the SME sliding base for the GrooveMaster sliding base. The GrooveMaster-II bearing house also will fit in the SME sliding base itself.

The mounting collar is fully compatible with Jelco configuration and can be used on any record player with Jelco mounting configuration.



## 5. Connection of the arm cable

The tonearm connector is designed to the highest specification, with a teflon base and high quality gold pins. This giving the best possible transmission of the signal. Carefully insert the 5-pin plug of the tonearm cable into the output connector of the tonearm and connect the RCA plugs of the tonearm cable to the input of the phono stage or the pre-amplifier.





## 6. Setting the Tracking force

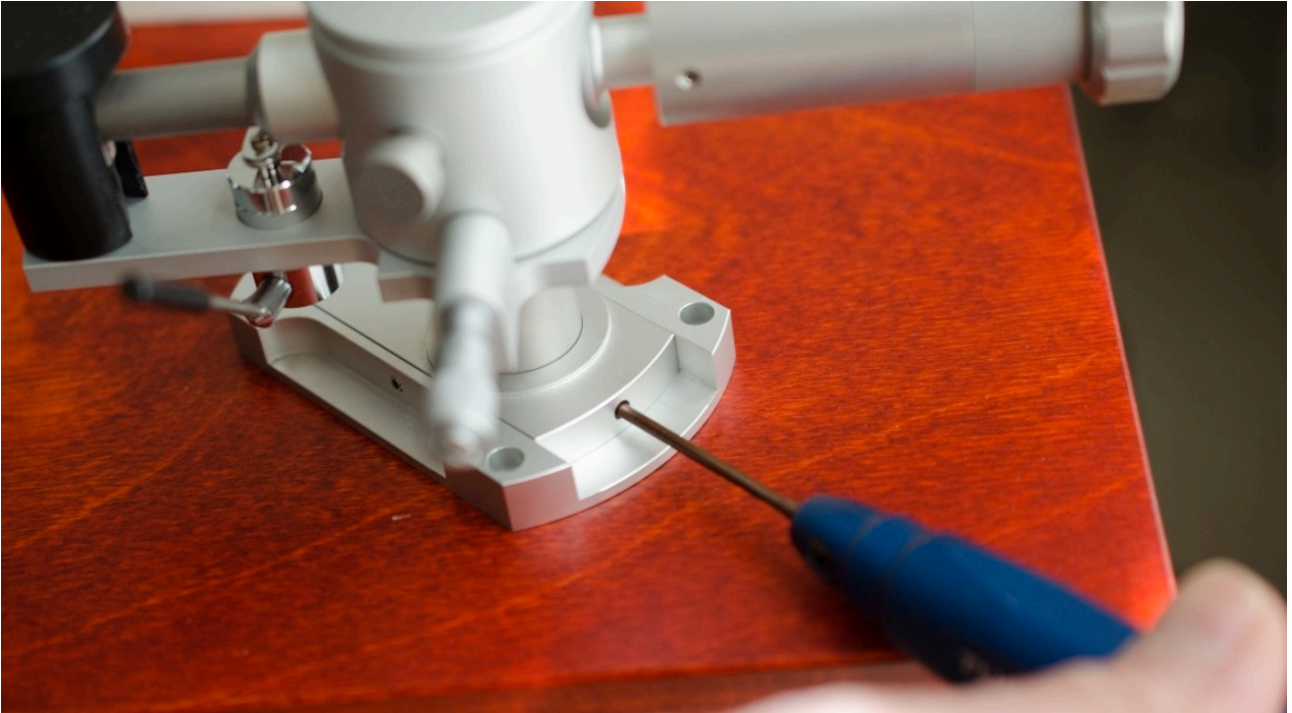
Loosen the screw on the counterweight and slide up forth or back until the correct tracking force is achieved. When using more heavy cartridges or a heavy headshell, you can use the stainless counterweight or the extensions to increase counterweight mass.



## 7. Adjustment the tonearm height (Vertical-Tracking-Angle / VTA)

You can change the height of your tonearm by loosening the locking screws on the side of the mounting collar or sliding base.

**Always set the VTF for your cartridge first, or you might damage your cartridges needle/cantilever!**

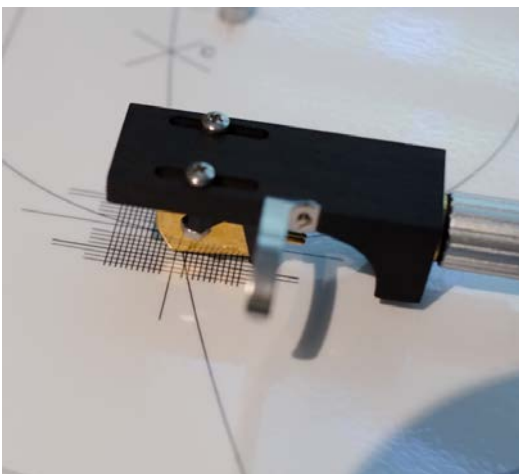


For the adjustment please put a record on your turntable. After loosening the screw, move the arm up or down to adjust the tonearm tube so that it is parallel to the record! Tighten the screw when finished. Please remember to re-check tracking force after adjusting VTA

## 8. Alignment of cartridge and tonearm

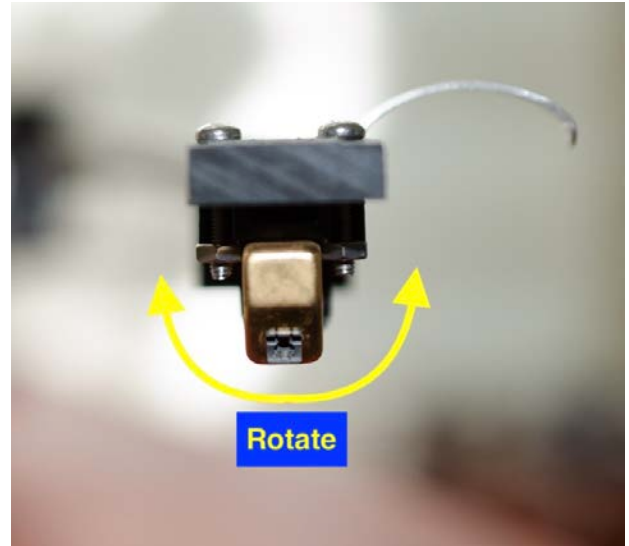
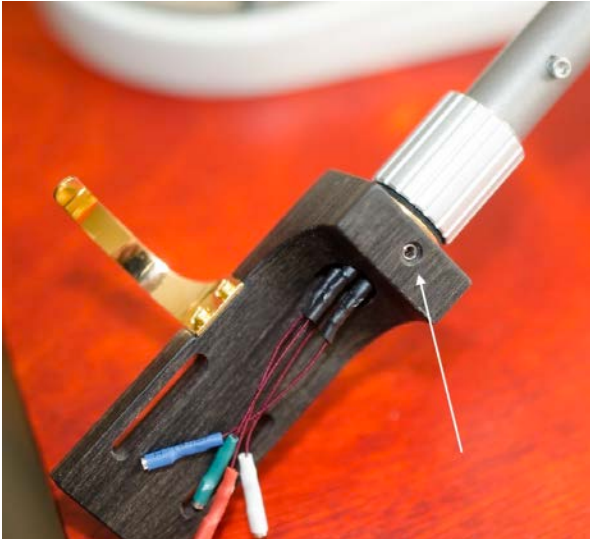
For the further setup of the tonearm, you need the supplied Arc protractor. Slide the protractor over the spindle of the turntable platter and turn the platter into the position as shown on the picture. Lower the cartridge and place the diamond stylus of the cartridge on the reference point of the alignment gauge, making sure that the edges of the tonearm tube are absolutely parallel to the marked lines printed on the cartridge alignment gauge.

If the configuration is correct, the needle will follow the printed Arc. If not, then you will have to change the position of the stylus. You can loosen the screws on the top of the tonearm's headshell and move the cartridge into the corresponding position. When you have a sliding base, slide the sliding base back or forth till the correct configuration is achieved.



## 9. Setting Azimuth on the Ebony headshell

We strongly advise to use the Azimuth setting on the Ebony headshell instead of the tonearm. It is easier and safer to set. When you do not have the possibility to set the Azimuth on your headshell, please follow the steps on the next page.





## 10. Setting Azimuth on the tonearm.



The azimuth indicates the angle of the stylus relative to the record, viewed from the front. It should be 90°. The Azimuth is already preset at factory. If you need to change the azimuth, please loosen the screw on the under side of the tonearm near the headshell using the 1.5 mm hex key screw driver or a 1.5 hex key.

**(Attention: Do not loosen the screw completely!)**



Now you can change the azimuth by rotating the cartridge. Once the adjustment is set, lock the screw on the under side of the arm tube near the headshell.

During these settings, you should view the tonearm and the cartridge always from above to avoid parallax errors. After finding the correct position **gently tighten** the screw without changing the selected position.

**Be careful not to tighten the screw to much!**

**It will damage the thread of the little screw. No warranty can be given when the screw/thread is damaged.**

## 11. Arm lift (cueing device)

A silicone oil dampened tonearm lift is provided. The lift can be adjusted in height by loosening the hex screw on the side. Slide the lift up and down until the correct height is achieved. Then tighten the hex screw.

To lower the stylus onto the record. Position the tonearm so that the stylus is over the record groove and lower the arm lift lever carefully. To lift the stylus from the record raise the arm lift lever carefully.



## 12. Anti Skating

The anti skating setting of the GrooveMaster is a frictionless, magnetic micrometer setting. By turning the micrometer up and down you can increase or decrease the anti skating force.

Note: normally the anti skating on 12 " tonearms is less important. The higher the VTF, the less important the anti skating.



NOTE: The dial can be operated while playing the record. A tabel of advised anti-skating setting is on the mounting sjablone.

### 13. Maintenance, transportation, service

#### Maintenance

If you don't use your GrooveMaster II tonearm for a longer time, please move the tonearm lifter in regular intervals. This avoid that the tonearm hang in a position when you listen to the music again.

#### Transportation

Should further transportation of the GrooveMaster tonearm be necessary, please always use the original packing material. Otherwise serious damage could occur.

#### Service

If any servicing or repair of a Audio Creative product is necessary, please first contact us first. PLEASE RETAIN ALL ORIGINAL PACKAGING. You will need it if this product has to be transported and/or shipped. Any further questions you may have about this product, please contact us.

#### Contact information:

Audio-Creative  
Rutenberg 9  
8301RE Raalte  
NL: +31 (0)6 423 73 473  
[info@audio-creative.nl](mailto:info@audio-creative.nl)  
[www.audio-creative.nl](http://www.audio-creative.nl)

